



MONTHLY MEMBERSHIP PROGRESS REPORT

District 9 NW

Results as of: 6/30/2017

GMT: OPEN

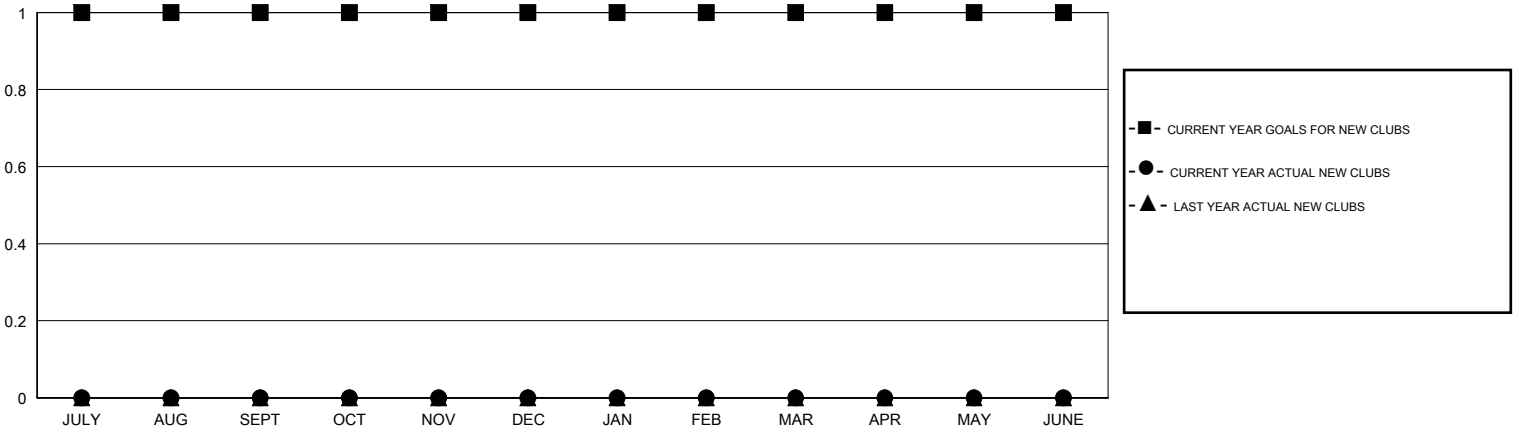
LOCATION IOWA

GMT CA

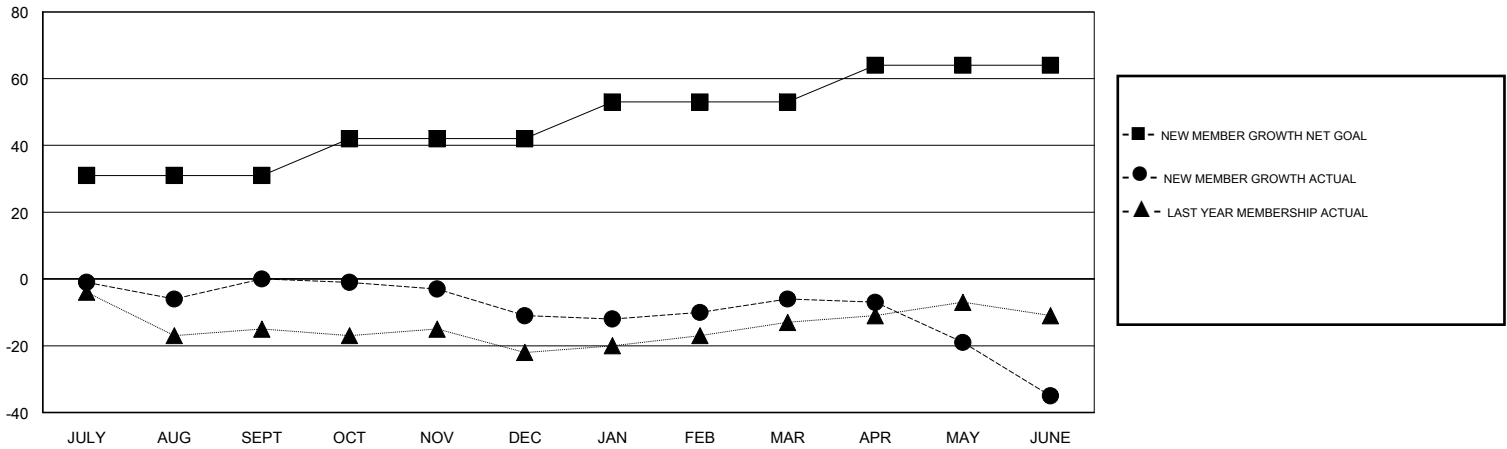
Clubs			
RESULTS FOR 2016-2017			
QUARTER	NEW CLUB GOAL	NEW CLUBS	DROPPED CLUBS
JULY/AUG/SEPT	1	0	0
OCT/NOV/DEC	0	0	1
JAN/FEB/MAR	0	0	0
APR/MAY/JUNE	0	0	0

Members			
RESULTS FOR 2016-2017			
QUARTER	NEW MEMBER GROWTH NET GOAL (not reinstated or transfers)	NEW MEMBER GROWTH ACTUAL (not reinstated or transfers)	DROPPED MEMBERS ACTUAL (including transfers)
JULY/AUG/SEPT	31	20	20
OCT/NOV/DEC	11	12	23
JAN/FEB/MAR	11	26	21
APR/MAY/JUNE	11	8	37

GOALS AND ACTUAL NEW CLUBS CUMULATIVE



GOALS AND ACTUAL MEMBERS CUMULATIVE



DROPPED CLUBS: 1	24 CLUBS OF 44 ADDED 1 OR MORE NEW MEMBERS	<u>GENDER DISTRIBUTION</u>	
DROPPED MEMBERS		MALE	757 (80.79%)
DECEASED	12	FEMALE	180 (19.21%)
CLUB CANCELLED	2	TOTAL FAMILY UNIT MEMBERS	
OTHER	87	116	
TOTAL	101	FAMILY MEMBERS PAYING HALF DUES	
		58	

[CLICK HERE FOR CUMULATIVE MEMBERSHIP DATA](#)